

# Stratasys F123 Series



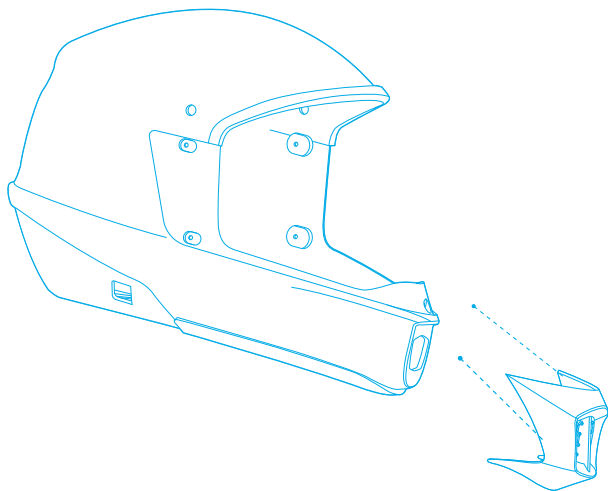
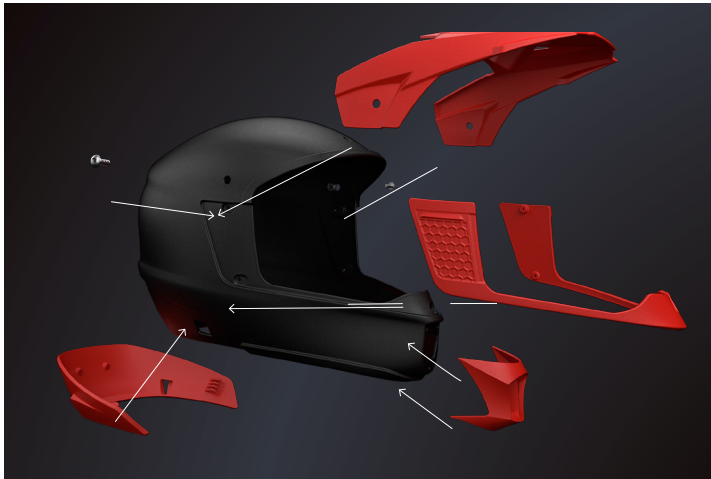
Reliable. Repeatable. Exceptional.



3  
2  
1  
F

# Precision 3D printing. Easy as F123.

**More reliable, more affordable,  
more productive rapid prototyping  
and manufacturing than ever  
before.**



## **More speed. More productivity.**

F123 Series 3D printers give designers, engineers and educators access to affordable, industrial-grade 3D printing. Work faster through concept iterations and component verification. Make jigs, fixtures and manufacturing tools faster, with strong, stiff materials. Increase productivity and reach your goals sooner with repeatable results.



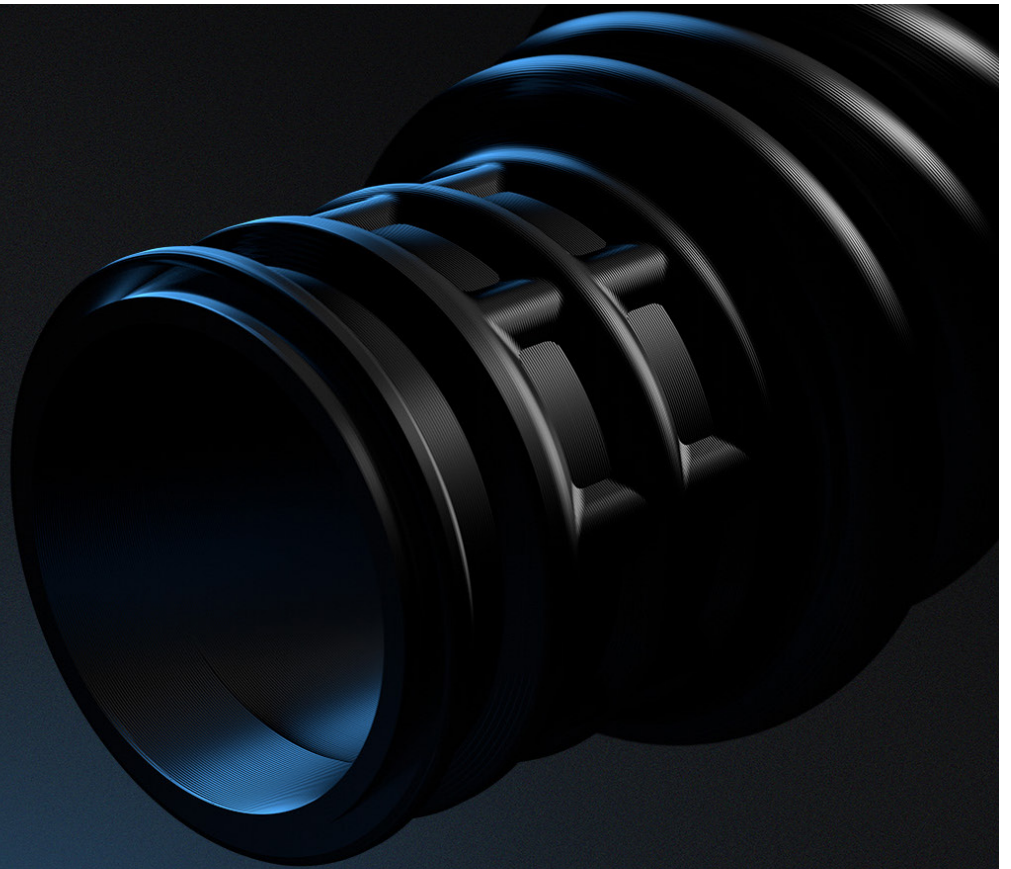
## **Smoother workflow. Quieter workspace.**

F123 3D printers are designed for supreme ease of use and a more streamlined workflow, working seamlessly with the design-to-print GrabCAD Print™ software. They provide the reliability and simplicity needed in a 3D printing platform to refine designs. This can be done within the work space, thanks to clean, quiet, safety-certified printers.



## Elastomer

Print large, complex elastomer parts with the F170™ and F370™ printers.



## More choices. More possibilities.

From the affordable F170™ to the versatile F370, the choices available with F123 Series printers are unmatched. Work with a wide range of materials including carbon fiber ABS and elastomer. Achieve complex geometries and interlocking components with our unique soluble support material. However intricate the part, the soluble support dissolves to leave a pristine finish, requiring no hands-on removal.



## 30 years of expertise. 100,000 hours of testing. Only one F123 Series.

For companies and schools new to 3D printing and established users alike, Stratasys F123 3D printers are the game-changing choice, with the highest levels of plug-and-print reliability and repeatable accuracy.





**Want to know more?**  
**View the full specifications of our**  
**F123 Series below or contact us for a**  
**recommendation on the right system for you**  
**at [Stratasys.com](https://www.stratasys.com).**



PRODUCT SPECIFICATIONS				
System Size and Weight	<b>F170, F370:</b> 1,626 x 864 x 711 mm (64 x 34 x 28 in.), 227 kg (500 lbs) with consumables			
Noise Specification	46 dB maximum during build, 35 dB when idle			
Layer Thickness		0.330mm (0.013 in.)	0.254mm (0.010 in.)	0.178mm (0.007 in.)
	PLA	○	●	○
	ABS-M30	●	●	●
	ABS-CF10	●	●	○
	ASA	●	●	●
	PC-ABS	●	●	●
	ABS-ESD7™	○	●	○
	Diran™	●	●	○
	410MF07	●	●	○
	FDM™ TPU 92A	○	●	○
Accuracy¹	Parts are produced within an accuracy of +/- .200 mm (.008 in), or +/- .002 mm/mm (.002 in/in), whichever is greater.			
Network Connectivity	Wired: TCP/IP protocols at 100 Mbps minimum 100 base T, Ethernet protocol, RJ45 connector Wireless-ready: IEEE 802.11n, g, or b; Authentication: WPA2-PSK, 802.1x EAP; Encryption: CCMP, TKIP			
System Requirements	Windows 7, 8, 8.1 and 10 (64 bit only) with a minimum of 4GB RAM (8 GB or more recommended)			
Operating Environment	<b>Operating:</b> Temperature: 59 – 86 °F (15 – 30 °C), Humidity: 30 – 70% RH <b>Storage:</b> Temperature: 32 – 95 °F (0 – 35 °C), Humidity: 20 – 90% RH			
Power Requirements	100–132V/15A or 200 – 240V/7A. 50/60 Hz			
Regulatory Compliance	CE (low-voltage and EMC directive), FCC, EAC, cTUVus, FCC, KC, RoHs, WEEE, Reach			
F170		F370		
Available material	PLA², ABS-M30, ABS-CF10, ASA, TPU 92A, QSR Support material	PLA², ABS-ESD7, ABS-M30, ABS-CF10, ASA, Diran 410MF07², FDM TPU 92A, PC-ABS, QSR Support material		
Build tray dimension	254 x 254 x 254 mm (10 x 10 x 10 in.)	355 x 254 x 355 mm (14 x 10 x 14 in.)		
Material Bays	2 total 1 model / 1 support	4 total 2 model / 2 support		
Software	GrabCAD Print	GrabCAD Print Insight™		

**VARINEX Zrt.**  
 1106 Budapest, Fehér út 10.  
 +361432 0248  
[varinex.hu](https://varinex.hu)  
[3dp@varinex.hu](mailto:3dp@varinex.hu)

ISO 9001:2015 Certified

¹ Accuracy is geometry-dependent. Achievable accuracy specification derived from statistical data at 95% dimensional yield. Z part accuracy includes an additional tolerance of -0.000/+slice height.  
 ² PLA and Diran 410MF07 do not utilize soluble support material. The supports are made of breakaway PLA.